



2018-2019

Report to the Community

**We catalyze community support to advance the mission, work, and impact of Seattle Colleges.
We engage our community to transform lives, promote equity, and increase access to quality,
affordable education in Seattle.**

Our Impact

Thanks to the Seattle Colleges, Myron Curry is having a second act. As a young man, he got into trouble and wound up in prison. He resolved that, once out, he would turn his life around. Now he's doing just that as a student at Seattle Central, majoring in IT Networking. He hopes to one day open his own business.

But the College has also nurtured another side of Myron: artist. As you can see from the self-portrait at right, he's brimming with talent — so much so that he was recently featured in a show at the College's M. Rosetta Hunter Art Gallery.

Myron's success wouldn't be possible without the generosity of donors who support the Desmond Jackson Memorial Scholarship and other scholarships that benefit him and hundreds of other hard-striving students at the Seattle Colleges — Central, North, and South. Thank you!



© 2019 by M. Curry Designs

By the Numbers

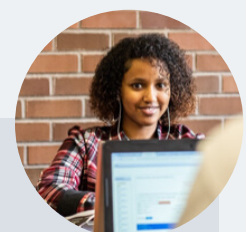
Seattle Colleges is an open-access institution. We recognize that significant gaps in educational attainment persist for first-generation students, students of color, and students from more modest economic backgrounds. Your contributions remove financial barriers to college enrollment and reduce student debt.



\$1.3 M
SCHOLARSHIPS
DISTRIBUTED



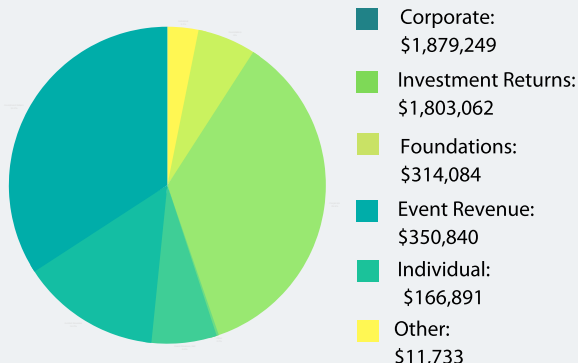
420
STUDENTS
AWARDED



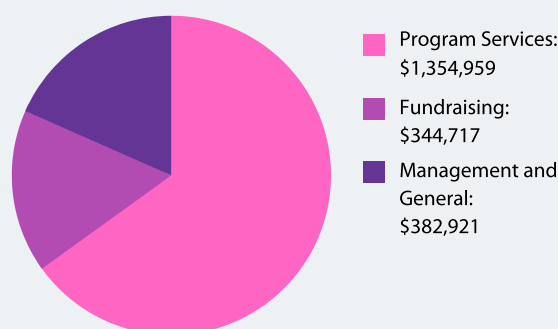
53%
AWARDED TO
STUDENTS OF COLOR

Revenue and Expenses

Revenue: \$5,275,902



Expenses: \$2,082,597



Transfer Revenue from merger: \$20,431,599

Net Assets: \$23,774,906

*June 30 2019 audited financial statement that reflect recent merger actions

Our Leadership



Dr. Shouan Pan, Chancellor,
Seattle Colleges



Kerry Howell, Vice Chancellor,
Advancement, Seattle Colleges



Keith Schreiber, Chair,
Seattle Colleges Foundation

Board Of Directors

Keith Schreiber, Chair
Rick Davis, Vice Chair
Barbara Dingfield, Secretary
Melba Bartels, Treasurer
Scott Ely
Michael Hugues
Jon Fine
Sarah Jane Gunter
Joseph Jahn
Frederick Kiga
Richard Locke
Rahim Rajan
Shiao-Yen Wu

Ex Officio Members

Dr. Shouan Pan, Chancellor, Seattle Colleges
Louise Chernin, Board of Trustees, Seattle Colleges
Dr. Warren Brown, President, North Seattle College
Dr. Sheila Edwards Lange, President, Seattle Central College
Dr. Rosie Rimando-Chareunsap, President, South Seattle College
Kerry Howell, Chief Executive Officer, Seattle Colleges Foundation

Board of Trustees

Steven Hill, Chair
Rosa Peralta, Vice Chair
Teresita Batayola
Louise Chernin
Robert M. Williams

A Stronger, United Foundation

In 2018 Seattle Colleges Foundation joined forces across Seattle Colleges to create a stronger, united foundation that makes the most of our resources, aligns our efforts, and integrates our processes. This thoughtful, strategic work has helped to ensure each gift you make has a more significant impact, helps more people, and strengthens our community like never before. Thank you to all of our donors and supporters who believe in education for all. We look forward to partnering with you again in 2020.